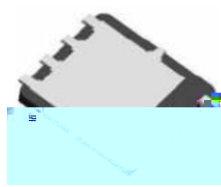
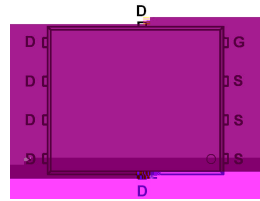


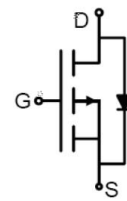
**Main Product Characteristics:**

PDFN5x6-8L



Pin Assignments



Schematic Diagram

**Features and Benefits:**



**Description:**

**Absolute Max Rating:**

Symbol	Parameter	Max.	Units

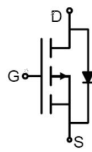
**Thermal Resistance**

Symbol	Characterizes	Typ.	Max.	Units

**Electrical Characteristics**

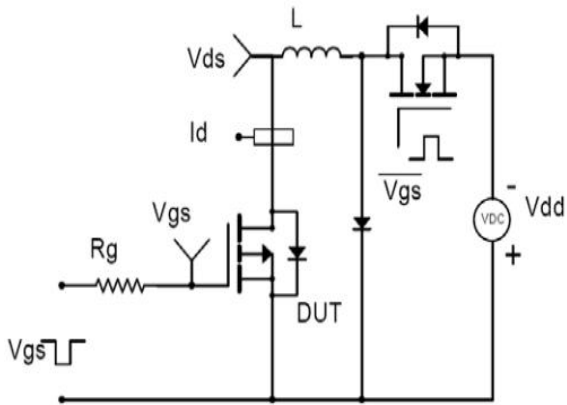
Symbol	Parameter	Min.	Typ.	Max.	Units	Conditions

**Source-Drain Ratings and Characteristics**

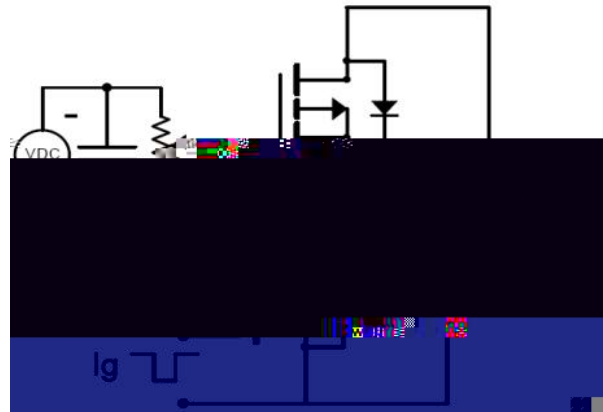
Symbol	Parameter	Min.	Typ.	Max.	Units	Conditions
						

### Test Circuits and Waveforms

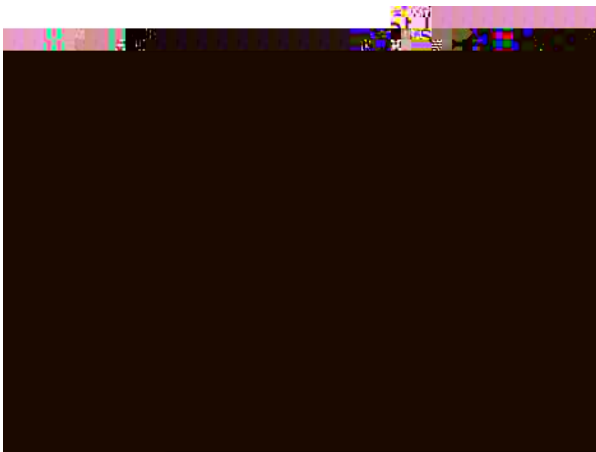
EAS Test Circuit:



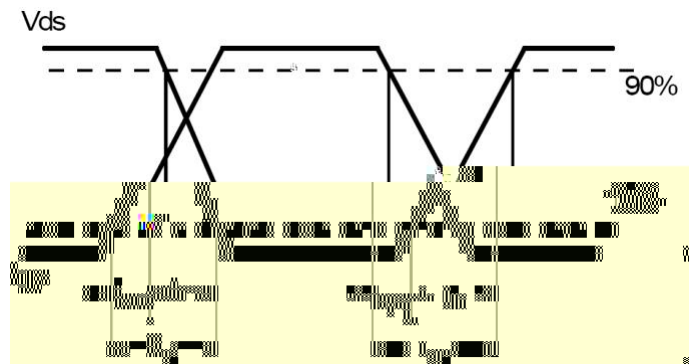
Gate Charge Test Circuit:



Switching Time Test Circuit:



Switching Waveforms:



Notes:

Typical Electrical and Thermal Characteristics

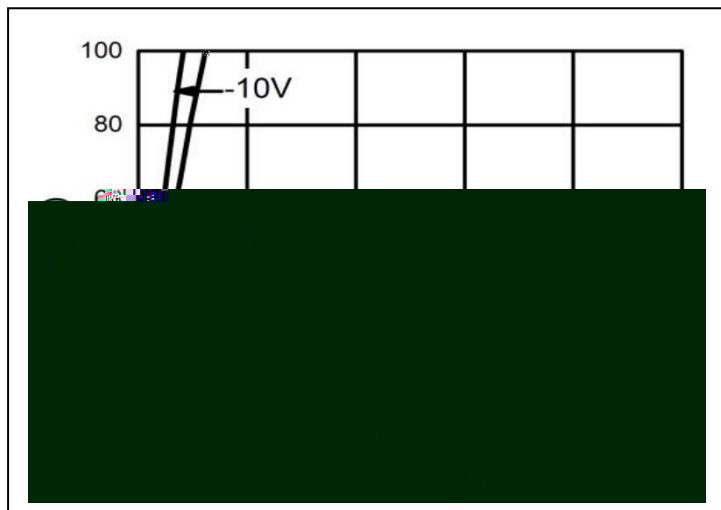


Figure1. Typical Output Characteristics

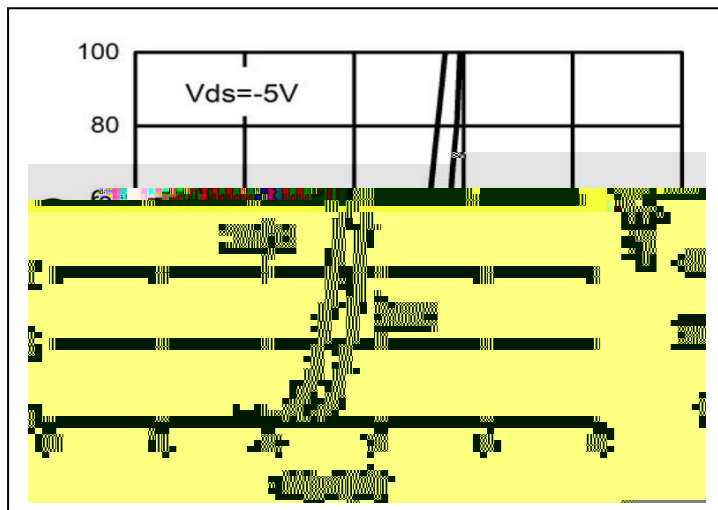


Figure2. Transfer Characteristics

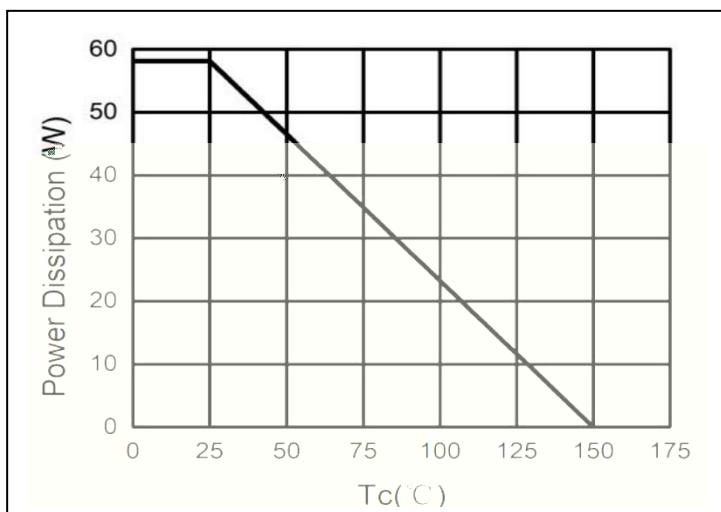


Figure3. Power Dissipation

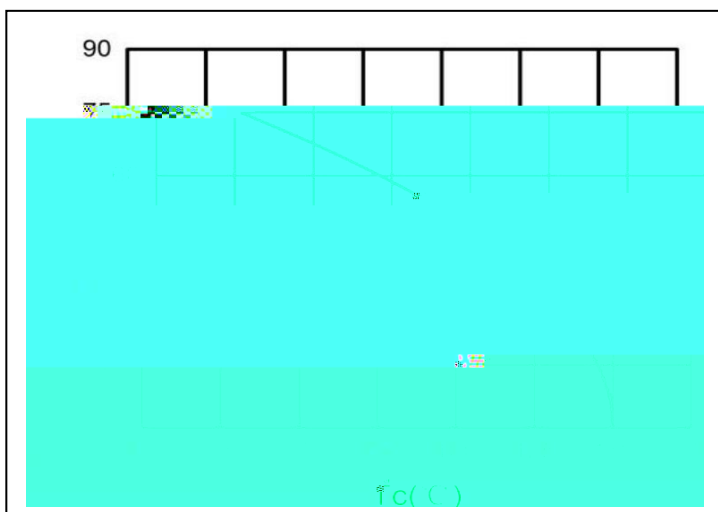


Figure 4. Drain Current

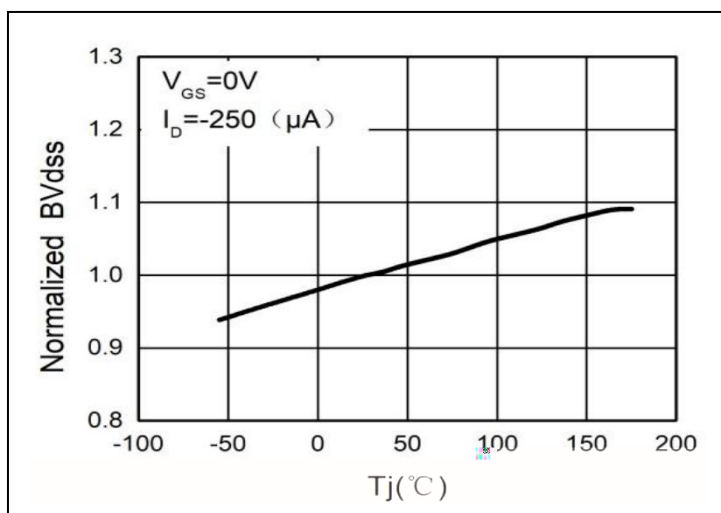


Figure5.  $BV_{DS}$  vs Junction Temperature

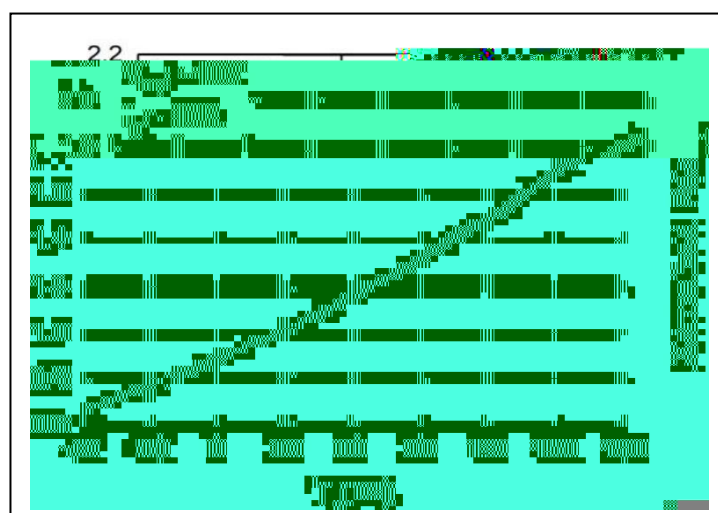


Figure6.  $R_{DS(ON)}$  vs Junction Temperature

Typical Electrical and Thermal Characteristics

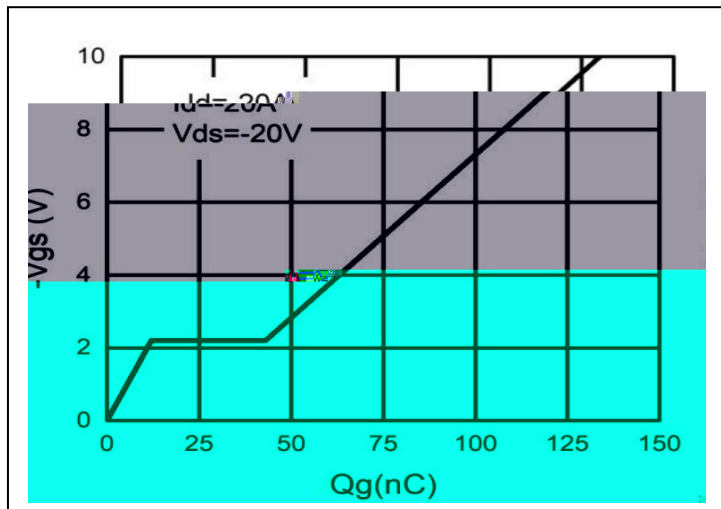


Figure7. Gate Charge

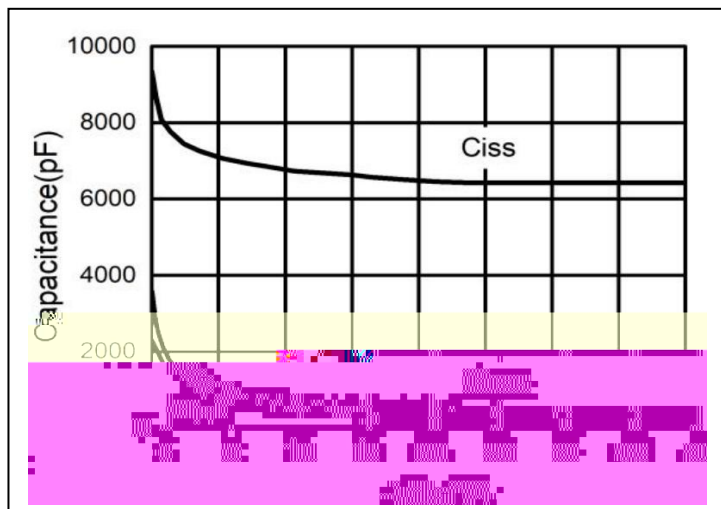


Figure8. Capacitance

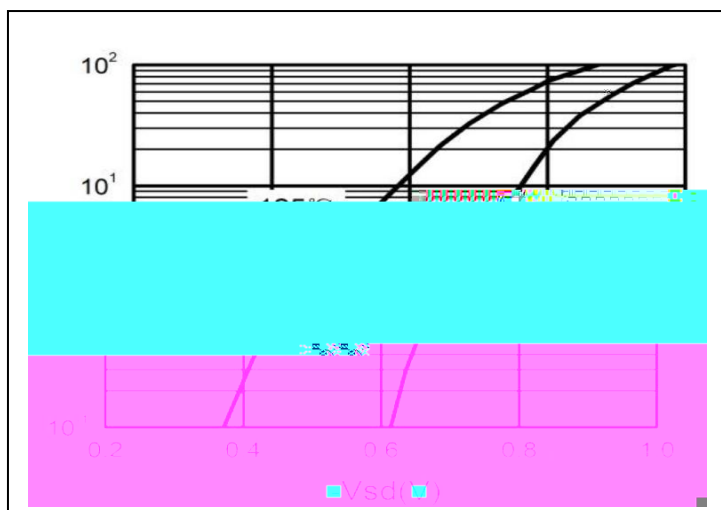


Figure9. Body-Diode Characteristics

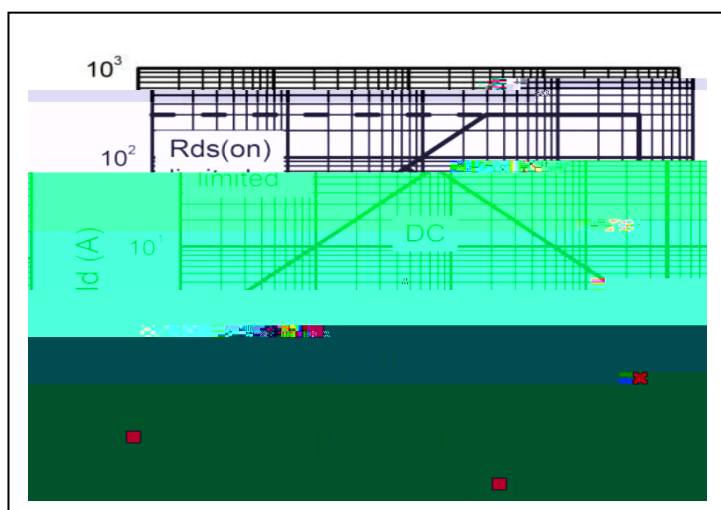
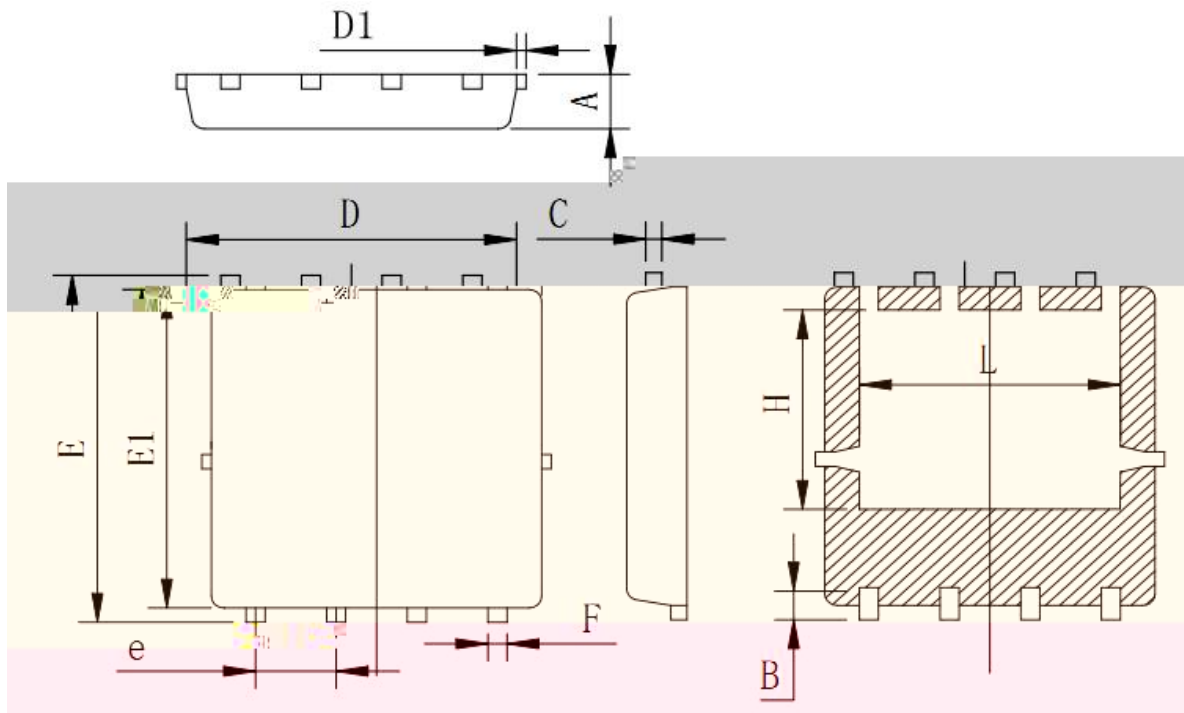


Figure10. Maximum Safe Operating Area

Mechanical Data



Symbol	Min	Typ	Max
A	0.90	0.95	1.00
B	0.48	0.58	0.68
C	0.20	0.254	0.50
D	5.00	5.20	5.40
D1			0.15
E	5.00	6.05	6.20
E1	5.40	5.55	5.70
e	1.22	1.27	1.32
F	0.25	0.30	0.35
H	3.27	3.47	3.67
L	3.80	4.00	4.20

**ATTENTION:**