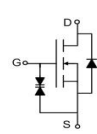
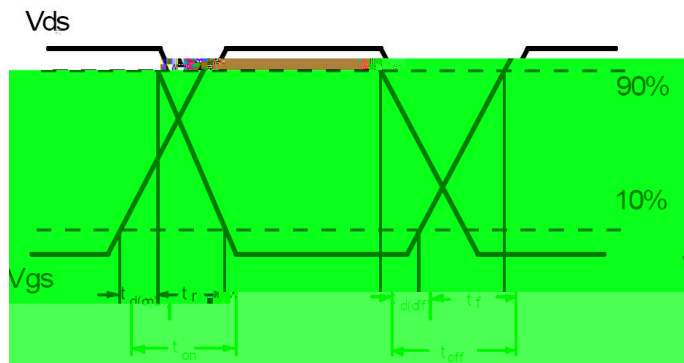
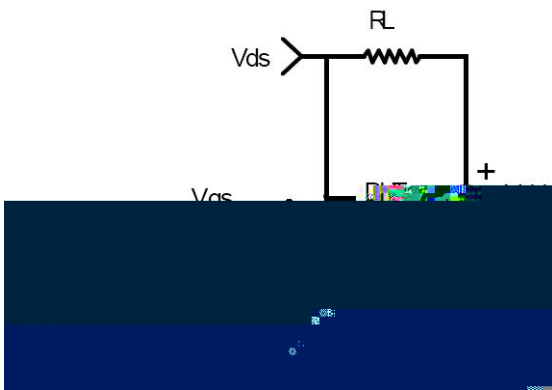
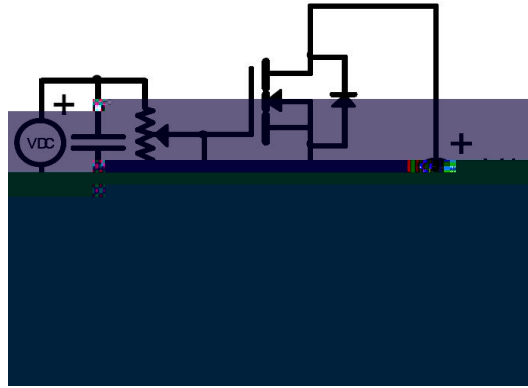


$I_D @ V_{GS} = 25\text{ V}$	C	D	C	, $V_{GS} @ 10$	0.3	
I_D		D	C		1.2	A
$I_D @ V_{GS} = 25\text{ V}$		D				

@ $A=25$

(B)D	D - -	60				$I_G = 0, I_D = 250 A$
D ()	D - - -		1.9	2.5		$I_G = 4.5, I_D = 0.3A$
			2.3	4.5		$I_G = 2.5, I_D = 0.2A$
G ()	G	0.5		1.2		$I_D = I_G, I_D = 250 A$
I _D	D - -			1	A	$I_D = 60, I_G = 0$
I _G	G - -			10	A	$I_G = 20, I_D = 0$
			1.7		C	$I_D = 10, I_D = 0.3A,$ $I_G = 4.5$
	G - -		0.4			
	G - -D (" ")		0.6			
()	-		2			$I_{DD} = 10, I_G = 10, I_D = 0.2A$ $I_{GE} = 10$
			15			
()	-		8			
	F		20			
C	I		23		F	$I_D = 25, I_G = 0,$ $I = 1.0 H$
C			3.1			
C			2.2			

I	C (B D)	C			0.3	A	FE 
I	(B D)	C			1.2	A	
o	D F				1.2		



C

;

D

JA

A = 25

1 2 F -4

2 . C

SOT-23 PACKAGE OUTLINE DIMENSION



		Dimension In Millimeters					Dimension In Inches				
NO.	DESCRIPTION	MIN.	TYP.	MAX.	REF.	MIN.	TYP.	MAX.	REF.	MIN.	MAX.
A	Package thickness	0.9		1.0		0.035		0.039			
B	Lead thickness	0.15		0.20		0.006		0.008			
C	Lead width	0.15		0.20		0.006		0.008			
D	Lead length	0.50		0.60		0.020		0.024			
E	Lead pitch	0.95		1.00		0.037		0.039			
F	Lead length	0.50		0.60		0.020		0.024			
G	Lead length	0.50		0.60		0.020		0.024			
H	Lead length	0.50		0.60		0.020		0.024			
I	Lead length	0.50		0.60		0.020		0.024			
J	Lead length	0.50		0.60		0.020		0.024			
K	Lead length	0.50		0.60		0.020		0.024			
L	Lead length	0.50		0.60		0.020		0.024			
M	Lead length	0.50		0.60		0.020		0.024			
N	Lead length	0.50		0.60		0.020		0.024			
O	Lead length	0.50		0.60		0.020		0.024			
P	Lead length	0.50		0.60		0.020		0.024			
Q	Lead length	0.50		0.60		0.020		0.024			
R	Lead length	0.50		0.60		0.020		0.024			
S	Lead length	0.50		0.60		0.020		0.024			
T	Lead length	0.50		0.60		0.020		0.024			
U	Lead length	0.50		0.60		0.020		0.024			
V	Lead length	0.50		0.60		0.020		0.024			
W	Lead length	0.50		0.60		0.020		0.024			

A

C

(

)

()C ,L

.H

I

(

)

I

(

()C ,L

)

A

/

"D

"