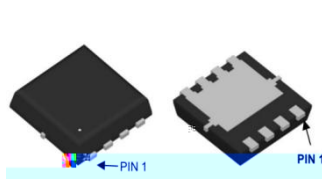
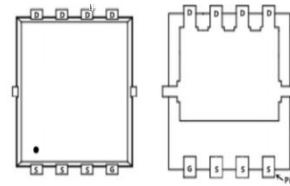


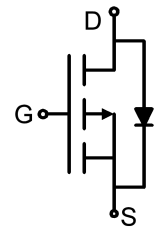
Main Product Characteristics:



PDFN 3*3-8L



Pin Assignments



Schematic Diagram

Features and Benefits:



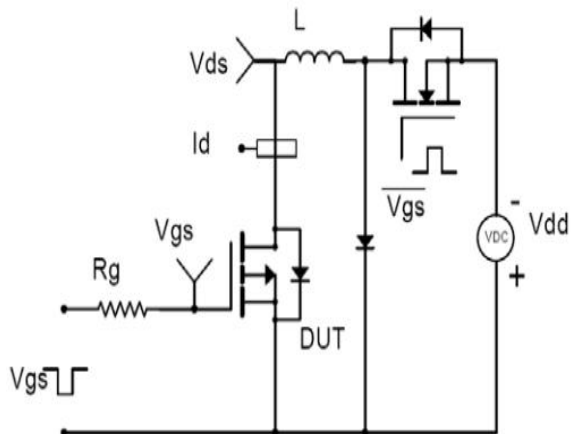
Description:

Absolute max Rating:

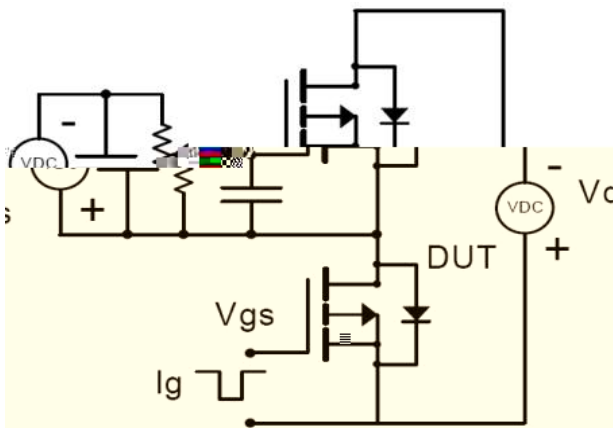
Symbol	Parameter	Max.	Units

Test circuits and Waveforms

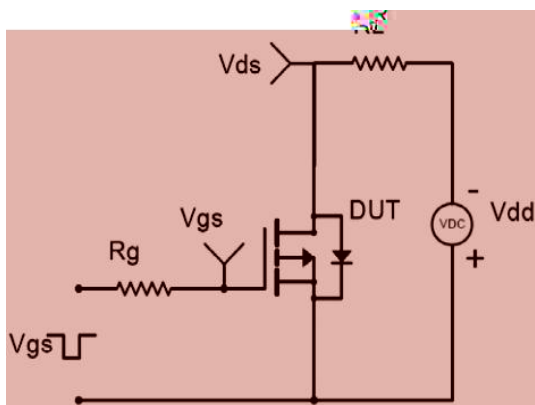
EAS Test Circuit:



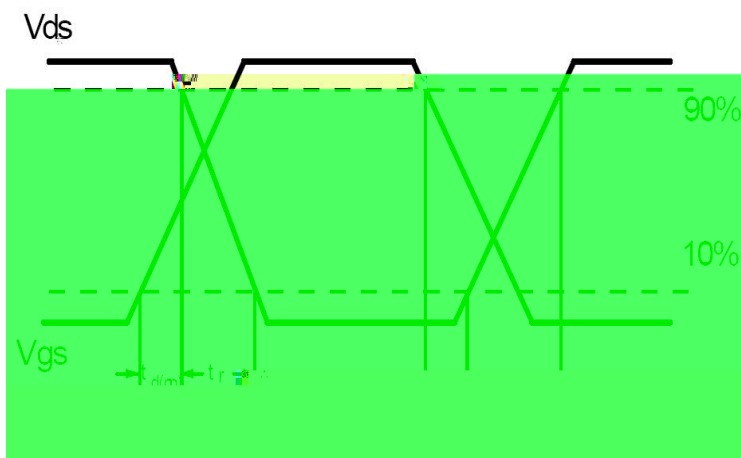
Gate charge test circuit:



Switching Time Test Circuit:



Switching Waveforms:



Notes:

Typical Electrical and Thermal Characteristics

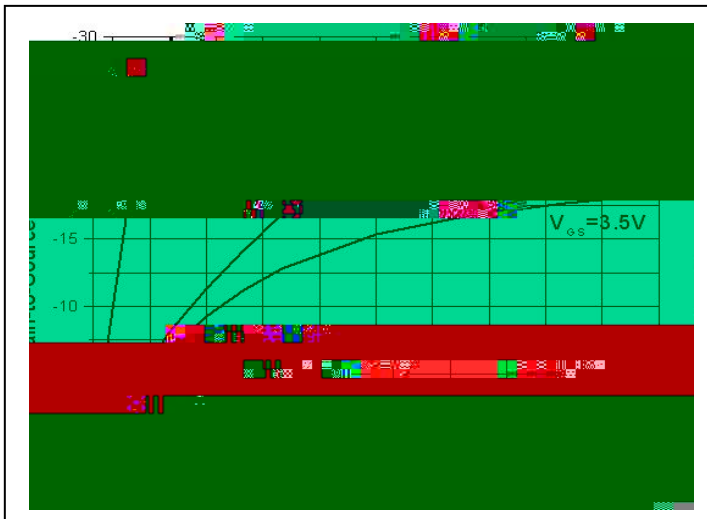


Figure 1. Typical Output Characteristics

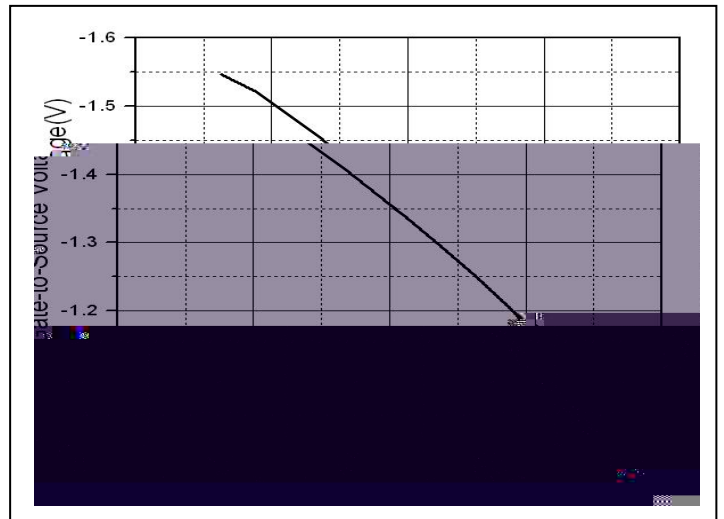


Figure 2. Normalized $V_{GS(th)}$ vs. Junction Temperature

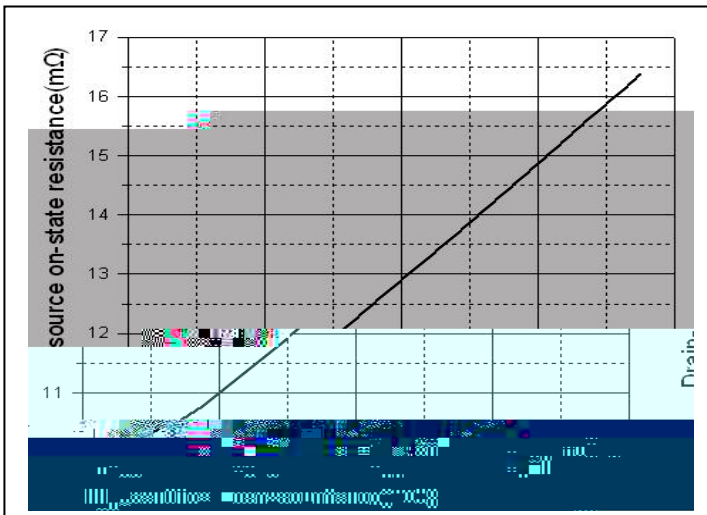


Figure 3. Normalized On-Resistance vs. Junction Temperature

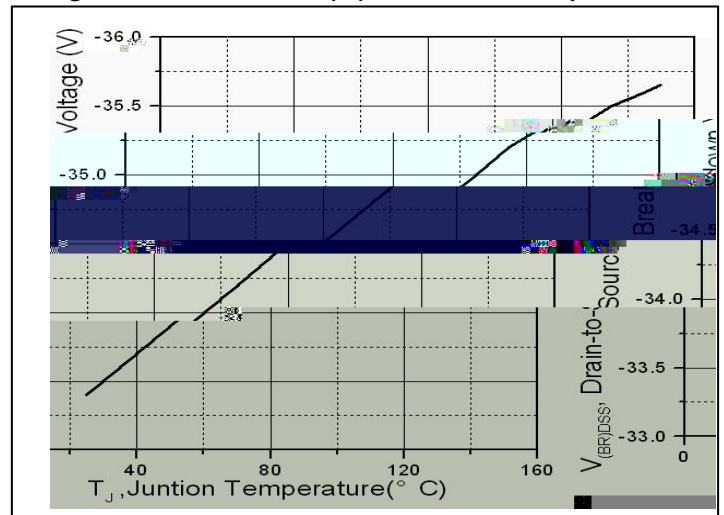


Figure 4. Drain-to-Source Breakdown Voltage vs. Junction Temperature

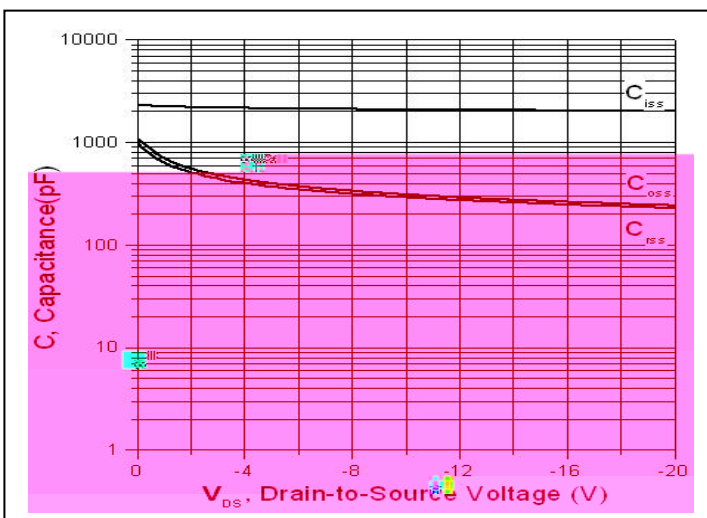
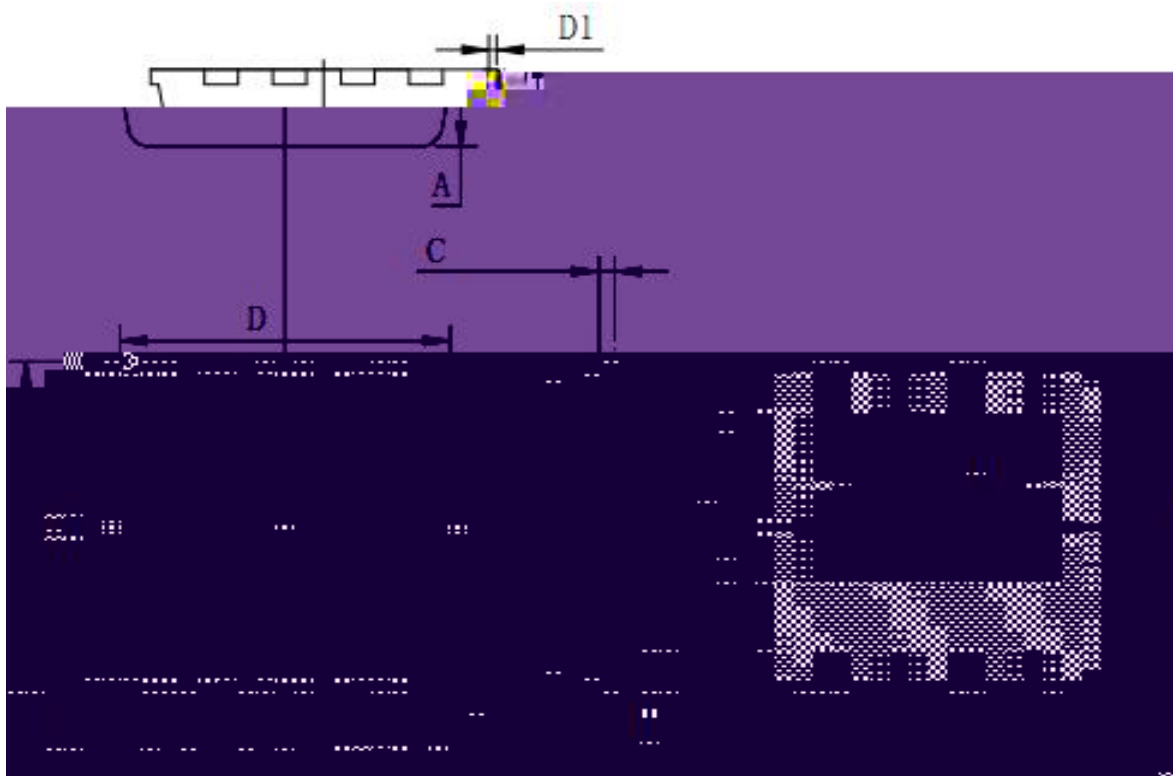


Figure 5. Capacitance Characteristics

Mechanical Data

PDFN 3*3 Package Outline(Unit:mm)



Symbol	Min	Typ	Max
A	0.725	0.775	0.825
B	0.28	0.38	0.48
C	0.13	0.15	0.20
D \approx	3.05	3.15	3.25
D1			0.10
E	3.25	3.35	3.45
E1	3.0	3.1	3.2
e	0.60	0.65	0.70

ATTENTION: