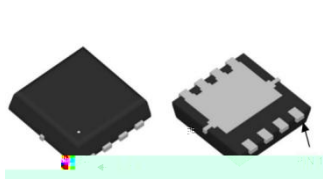
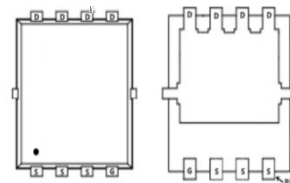


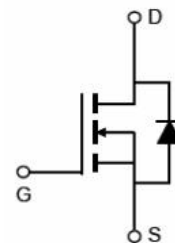
Main Product Characteristics:



PDFN 3*3-8L



Pin Assignments



Schematic Diagram

Features and Benefits:



Description:

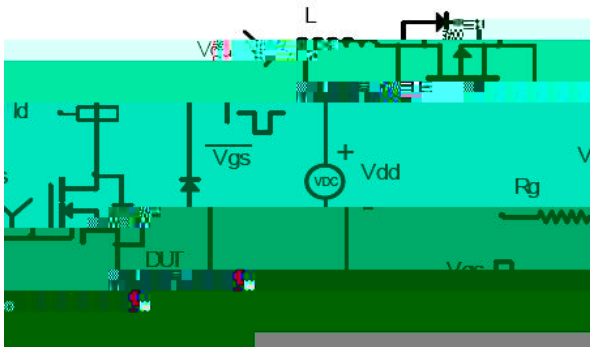
Absolute Max Rating:

Symbol	Parameter	Max.	Units

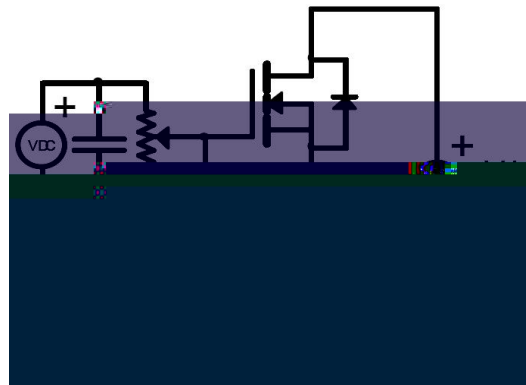
Thermal Ro m''

Test Circuits and Waveforms

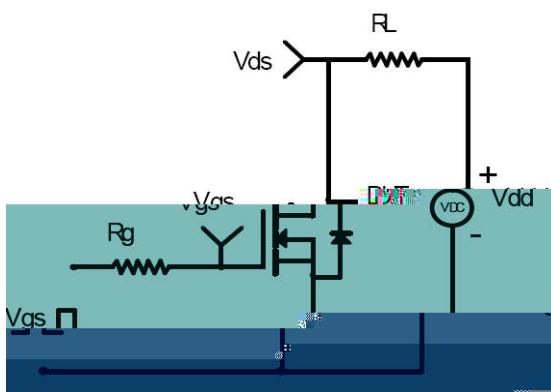
EAS Test Circuit:



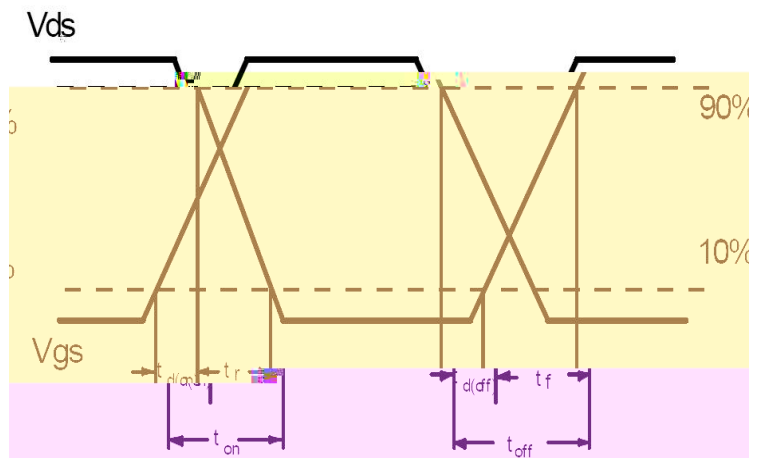
Gate Charge Test Circuit:



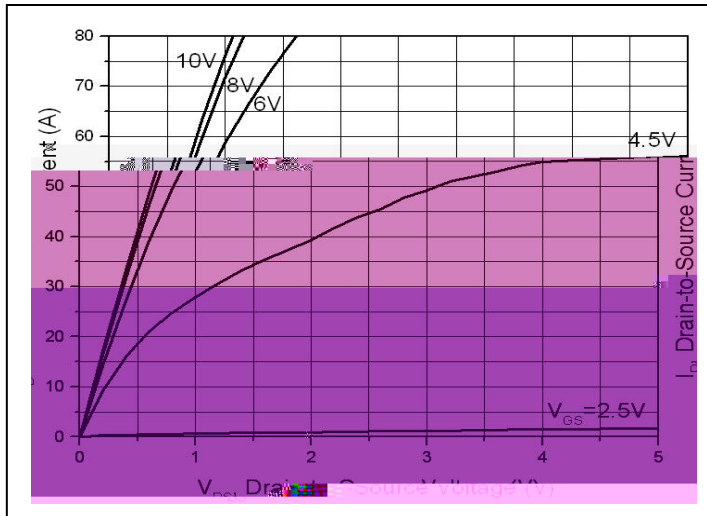
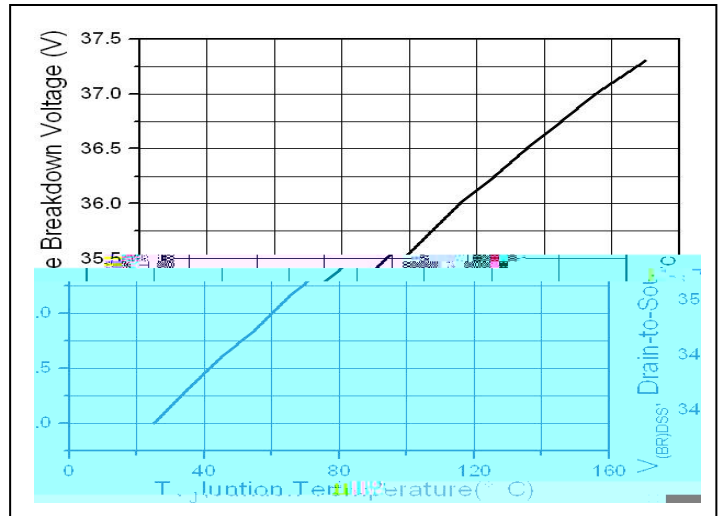
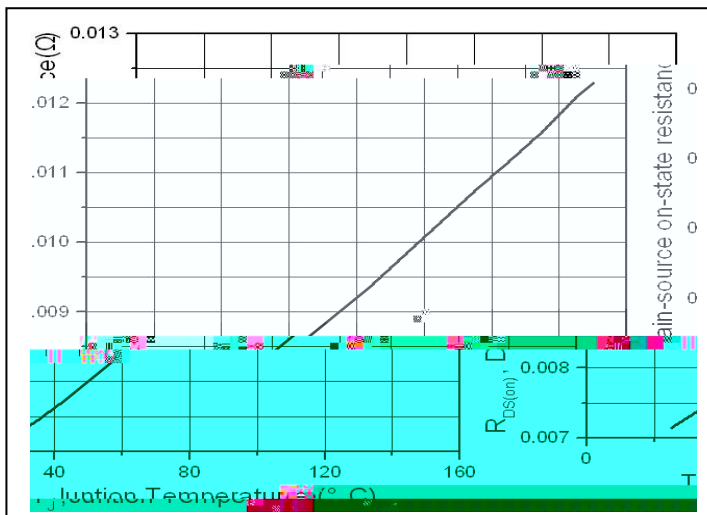
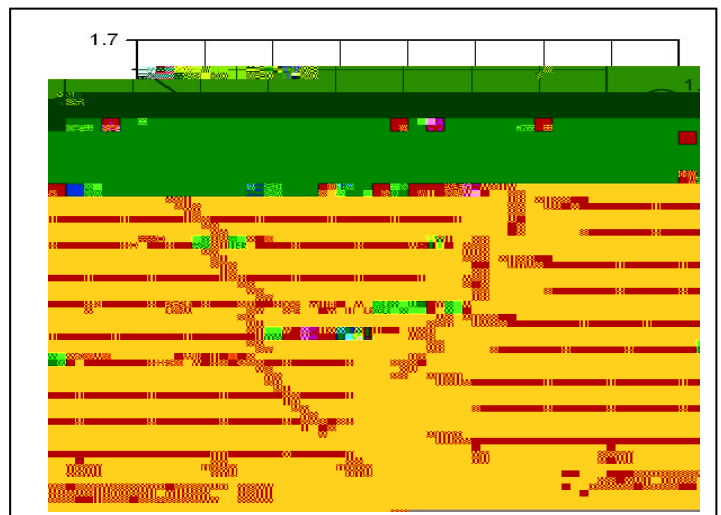
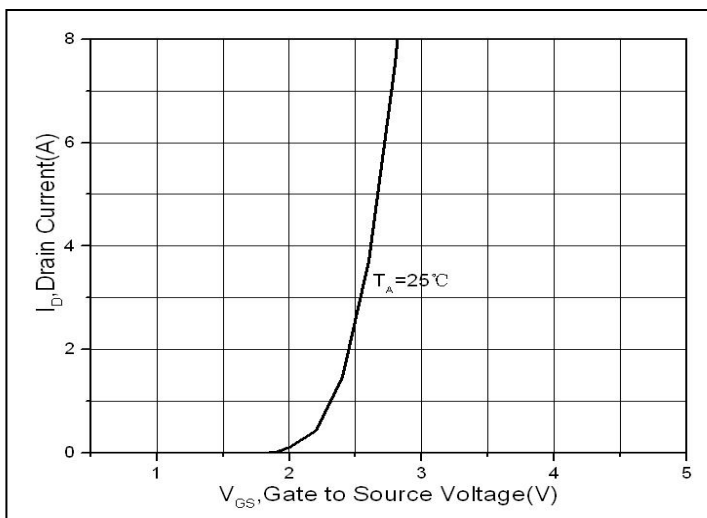
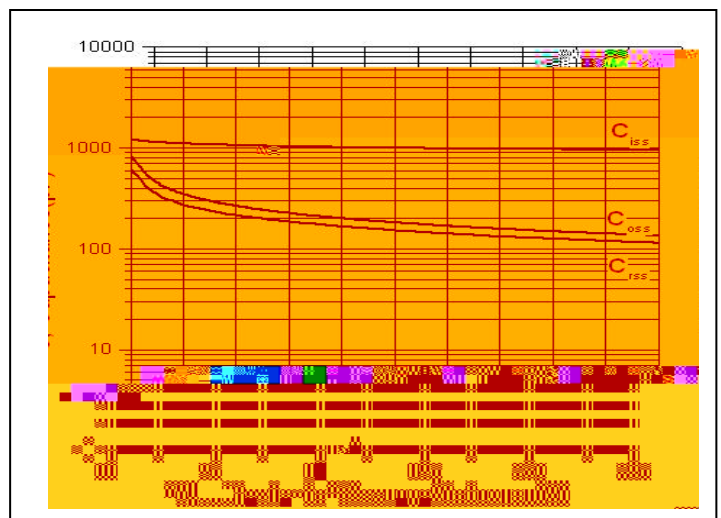
Switching Time Test Circuit:



Switching Waveforms:

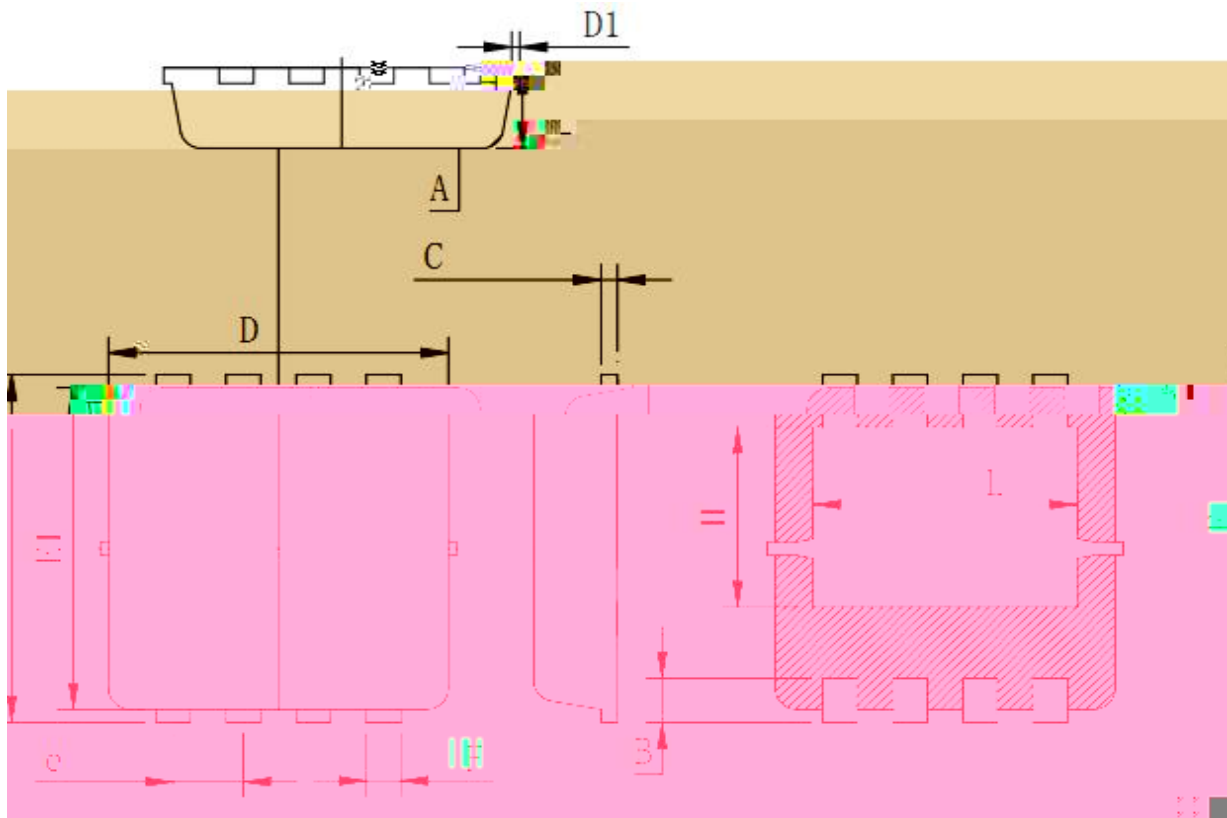


Notes:

Typical Electrical and Thermal Characteristics

Figure 1. Typical Output Characteristics

Figure 2. BVDSS vs. Junction Temperature

Figure 3. Normalized On-Resistance vs. Junction Temperature

Figure 4. Normalized $V_{GS(th)}$ vs. Junction Temperature

Figure 5. Transfer Characteristics

Figure 6. Capacitance Characteristics

Mechanical Data

PDFN 3*3 Package Outline(Unit:mm)



Symbol	Min	Typ	Max
A	0.725	0.775	0.825
B	0.28	0.38	0.48
C	0.13	0.15	0.20
D	3.05	3.15	3.25
D1			0.10
E	3.25	3.35	3.45
E1	3.0	3.1	3.2
e	0.60	0.65	0.70
F	0.25	0.30	0.35
H	1.73	1.73	1.83
L	2.35	2.45	2.55

ATTENTION: